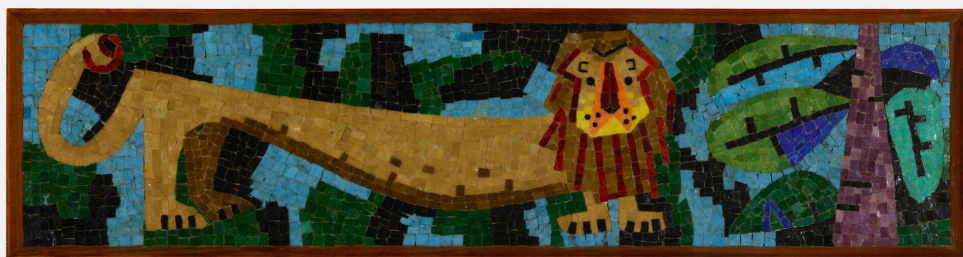


# DESIGN



239

**EVELYN ACKERMAN**

Lion mosaic

ERA Industries | glass tile mosaic laid to Masonite in artist's frame  
13 h × 49 w in (33 × 124 cm)

Paper manufacturer's label to reverse 'ERA Industries'.

**Literature:** *Hand-in-Hand: Ceramics, Mosaics, Tapestries and Woodcarvings by the California Mid-century Designers Evelyn and Jerome Ackerman*, Chavkin and Thackaberry, ppg. 94,110-111

**Estimate:** \$3,000–5,000

**Result:** \$5,670

**Auction**

28 February 2024  
10:00 am pt

**LAMA**

6666 Lexington Avenue  
Los Angeles CA  
t 323 904 1950  
f 323 904 1954

lamodern.com

bid@lamodern.com

ERAMODERN