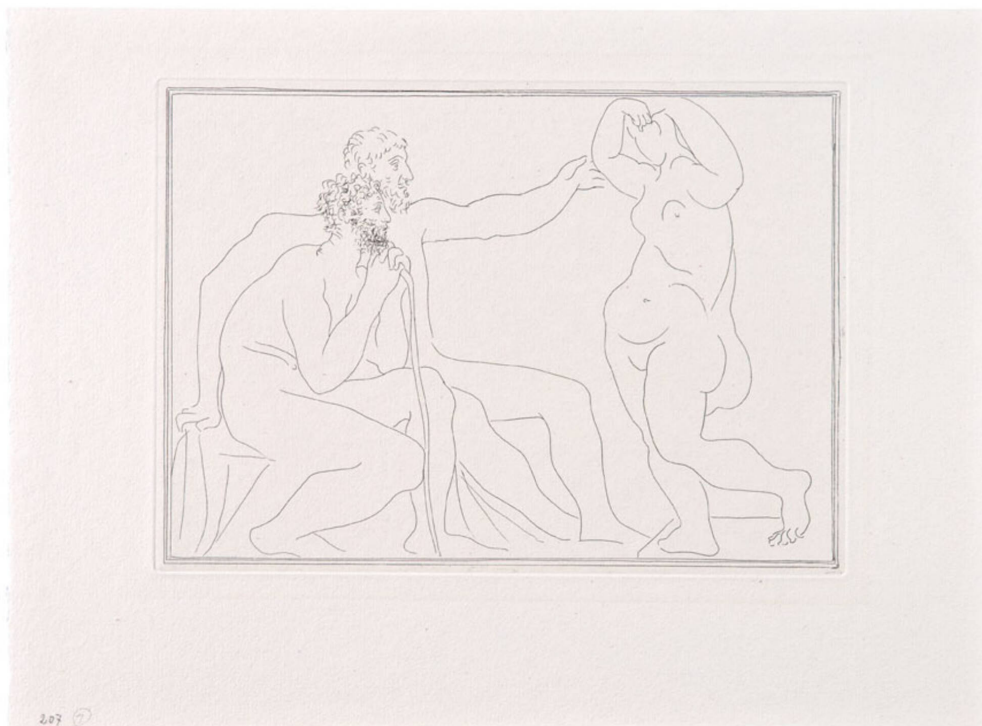


MODERN ART & DESIGN



Auction

23 February 2014
noon pt

LAMA

6666 Lexington Avenue
Los Angeles CA
t 323 904 1950
f 323 904 1954

lamodern.com
bid@lamodern.com

347

PABLO PICASSO

Deux Sculpteurs devant une Statue (from La Suite Vollard)

Etching on Montval paper with Vollard watermark

Image: 8.75 x 12.25; Sheet: 12.75 x 17.375

Signature: Bears the inscription in pencil 207 7 lower left sheet

Published by A. Vollard, Paris

Edition: From the edition of 260

Provenance: Ambroise Vollard Estate, Paris, France; Baron Henri Petiet, Paris, France (acquired directly from the above); The Estate of Ruth and Dalzell Hatfield, Los Angeles, California (acquired directly from the above, September 19, 1973); Thence by descent

Literature: Bloch, Georges. Picasso: Catalogue of the Printed Graphic Work, 1904-1967. Berne: Editions Kornfeld & Klipstein, 1968. #140.

Estimate: \$3,000–5,000

Result: \$5,000

LAMA